

Float Glass Factory Contractor

Western quality equipment tailored to global markets

Stewart Engineers uses its considerable experience in float glass to design and build float facilities that maximize profit. Technologies like the EcoMelt® Furnace, StewartFloat® Tin Bath and AcuraCoat® CVD Online System combined with Stewart's international project management and procurement experience result in float facilities that are built on schedule, on budget, and with quality.



TECHNOLOGY

Stewart Engineers specializes in helping new entrants to float glass manufacturing understand what they need to succeed. Determining ideal tonnage, staffing, product mix, glass recipes, and other critical design decisions can be tough for groups entering the float glass market.

A Feasibility Study is the best tool for determining market strength and market positioning. Stewart has been in the glass industry for many decades and can assist customers in making the decisions that will determine their future success. Whether or not a customer purchases a Feasibility Study, Stewart Engineers advises our customers on the best paths to success.



PROJECT MANAGEMENT

Managing a project as large as a float facility is a serious challenge. Just as difficult as fielding an effective construction and commissioning team, is hiring and training an operations team.

Stewart's approach is to hire well qualified local assistants for the construction project management and train the local team not only on building a facility but operating it as well. By the time of commissioning, our customer will have an expert team that can begin to transition from Stewart to the customer.



SCHEDULE

Once the project is fully funded a contract is developed, a letter of credit is agreed upon, and the down payment is received; the project begins. With the project underway Stewart deploys a team to the local region to gather data. Stewart develops a detailed engineering package, begins procurement, and assists the customer with local tasks like permitting. Using the detailed engineering package local civil works commence.

Detailed installation packages are compiled for the local contractors. Equipment begins to be delivered at month 6 with erection of process equipment beginning at month 7. Cold testing and heat-up last 2 months with training and commissioning taking around 2 months. The entire project is completed in 22 months.

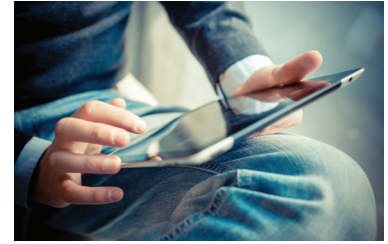
Stewart's Facility Product Range



Appliance Glass



Solar Glass



Electronics Glass



Architectural Glass



Automotive Glass

Stewart's Facility Technical Specifications

Glass Composition	Soda Lime, Low Iron, Tinted, Borosilicate, Aluminosilicate
Capacity	50 to 1,200 MTPD
Thickness Range	0.5 to 25 mm final glass thickness
Width Range	2,000 to 5,200 mm gross ribbon width
Yield	90% Net Glass Yield
Plant Operating Costs	Optimized to local market
Final Cut Size	Any
Total Capital Cost	\$100 to \$250 million
Glass Quality	ASTM C1036-06 Quality Level 2
Schedule	18-22 months

Engineered and designed to fulfill your needs

TIN BATH

GLASS COATING

GLASS FACTORY

A GLOBAL PRESENCE



36
Years

100+
References

14
Countries

12316 Hampton Way Drive, Ste 200
Wake Forest, NC 27587 USA

T: (01) 919.435.9100

F: (01) 919.435.9101